

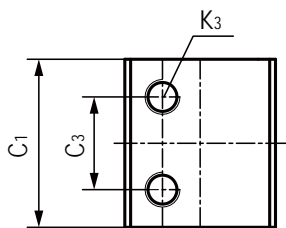
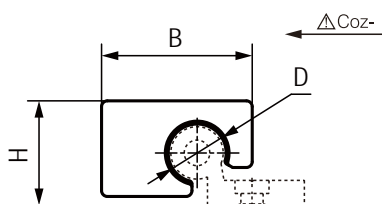
### WRU01多用型圆导轨滑块 Round rail sliding blocks(High-performance)



#### 产品特性 Product features

- 耐磨层材料TEFPLAS<sup>®</sup>B
  - 使用温度  $\pm 200^{\circ}\text{C}$
  - 最高允许速度4m/s
  - 重量轻、快速装配
  - 可用于WR系列单轨和双轨
  - 无噪音运行
- Wear layer material: TEFPLAS<sup>®</sup> B
  - Operation temperature  $\pm 200^{\circ}\text{C}$
  - Max. speed 4m/s
  - Fast assembly and light weight
  - For WR single and dual guide rails
  - Silent operation

#### 标准规格 Standard specifications



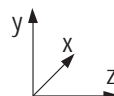
产品编码 Part No.:

WRU01-10-TPB-NA

NA:本色 Nature color

材料 Material:TEFPLAS<sup>®</sup> B

内径 Inner diameter



产品编码 Part No.	D [mm]	公差 Tolerance [mm]	B [mm]	C <sub>3</sub> [mm]	C <sub>1</sub> [mm]	H [mm]	K <sub>3</sub> [mm]	重量 Weight [g]	静态载荷 Static load		
									Coz- [N]	Coz+ [N]	Coz- [N]
WRU01-10-TPB-NA	10	+0.083/+0.020	26	16	29	18	M6	20	5800	5800	2900
WRU01-16-TPB-NA	16	+0.102/+0.032	34.5	18	36	27	M8	48	11520	11520	5760
WRU01-20-TPB-NA	20	+0.124/+0.040	42.5	27	45	36	M8	99	18000	18000	9000